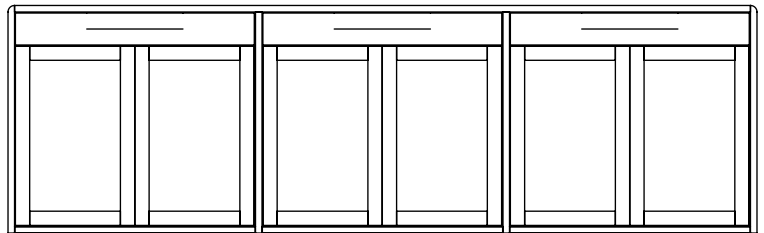
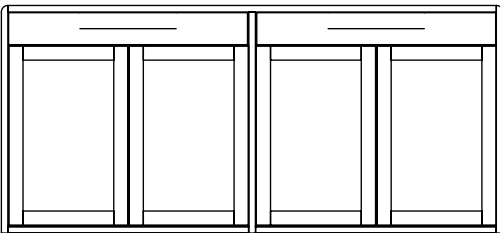
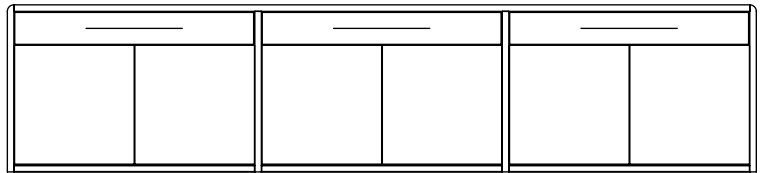
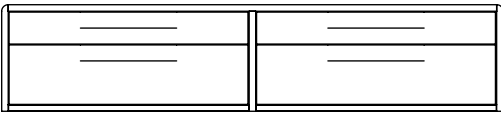
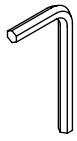


VÅG

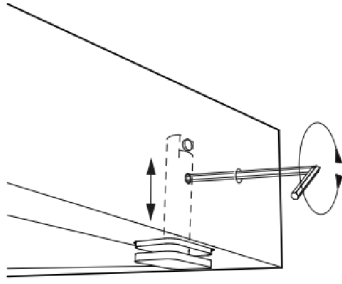


norrgavel

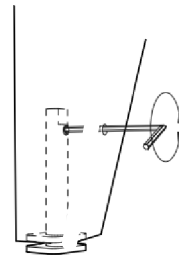
ADJUSTMENTS OF LEGS



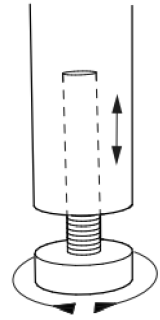
X1



SOCKEL

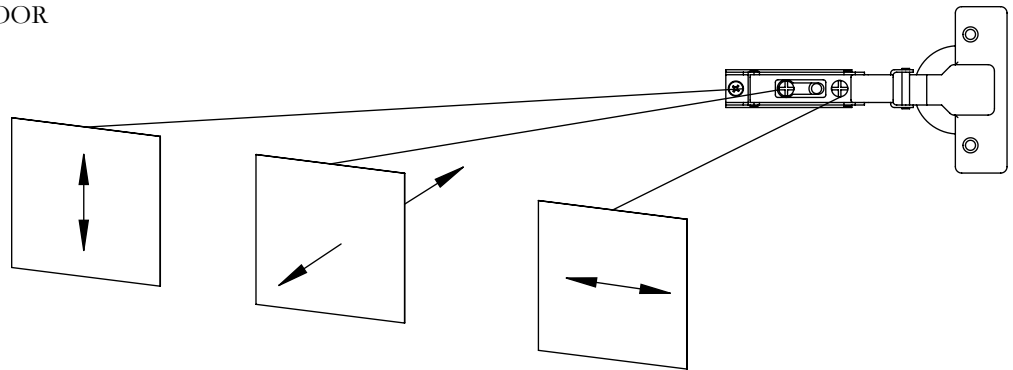


BENSTÄLLNING TRÄ

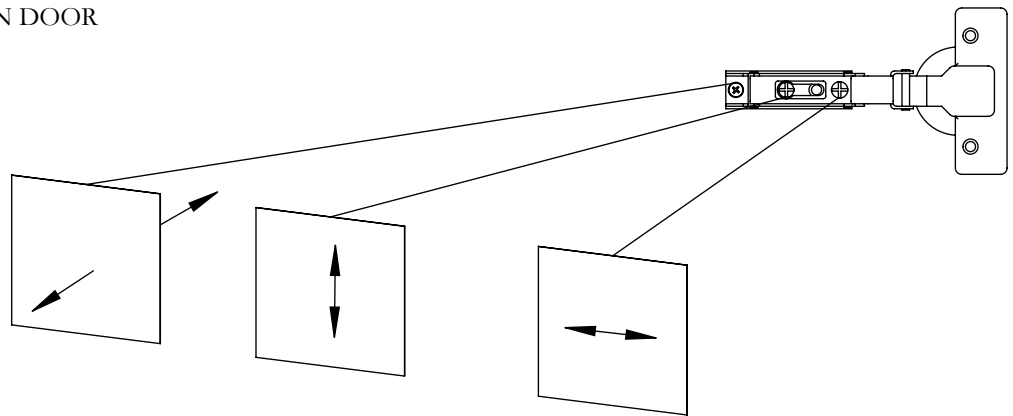


BENSTÄLLNING METALL

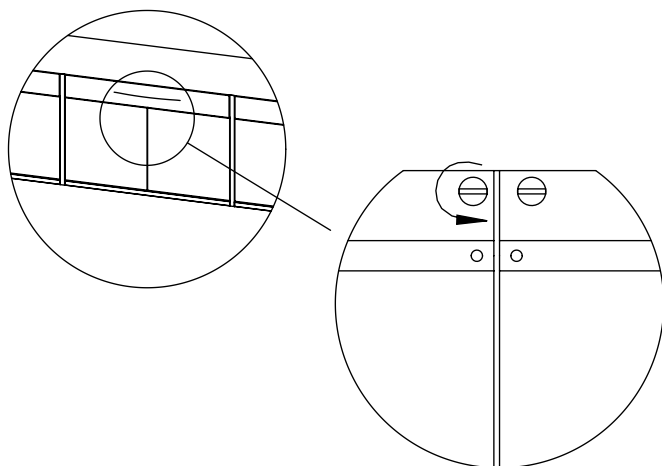
ADJUSTMENTS OF GLASS DOOR



ADJUSTMENTS OF WOODEN DOOR



ADJUSTMENTS OF WOODEN DOOR



SVENSKA

Om luckan inte fastnar i stängt läge,
justera magnetsbeslaget på luckans insida.

Magnetbeslaget går att skruva in/ut med hjälp av en skruvmejsel. Vrid skruven något varv och stäng därefter luckan. Vid behov, upprepa procedur och stäng luckan på nytt.

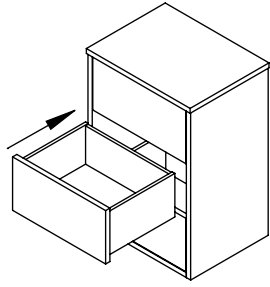
ENGLISH

If the door does not stay inclosed position,
adjust the magnetic fittings placed on the door facing inside.

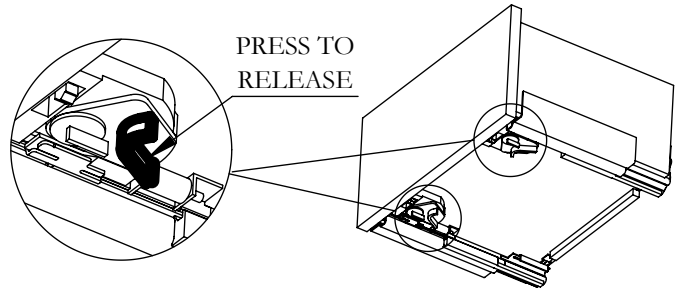
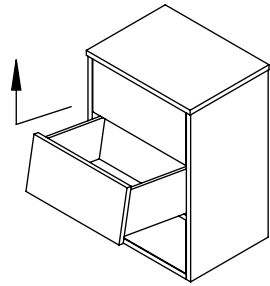
The magnetic fitting can be screwed in/out using a screwdriver.
Turn the screw a few turns and try to close the door.
If needed, repeat procedure and close the door again.

ADJUSTMENTS OF DRAWER RUNNERS WHEN NEEDED.

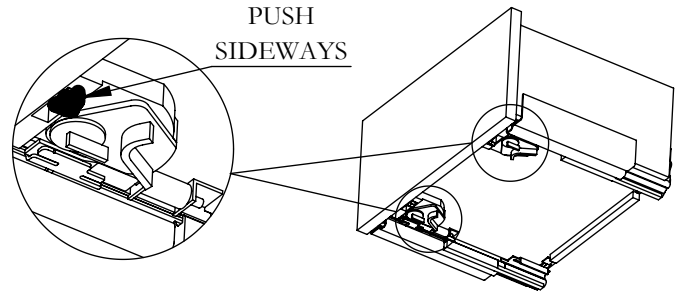
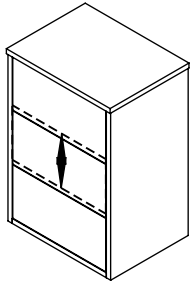
A. PLACE DRAWER



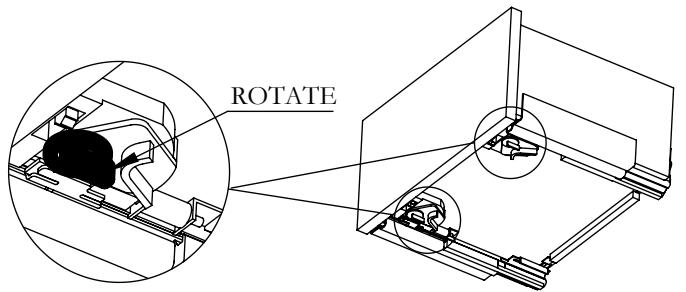
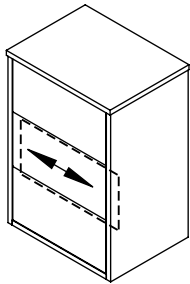
B. REMOVE DRAWER



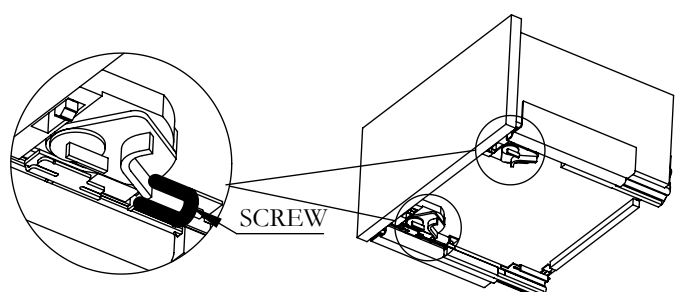
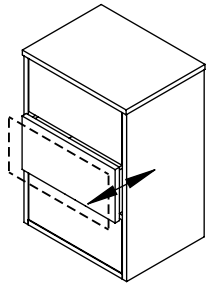
C. ADJUST PLACEMENT HEIGHT



D. ADJUST PLACEMENT SIDEWAY



E. ADJUST PLACEMENT DEPTH



F. ADJUST PLACEMENT FACE

